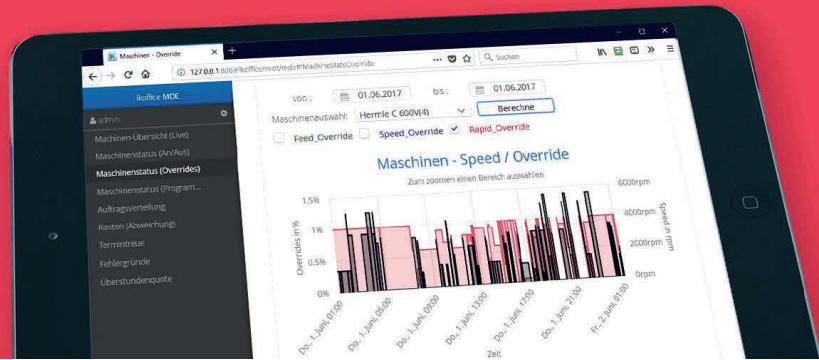


LivingMES

Industry 4.0 & Digitalization



YOUR INTERFACE TO THE SHOPFLOOR

The IKOffice software is a leader in the interaction of machine data and graphical capacity planning and is thus decisive on the way to digitalization and "Industry 4.0" for the tool and moldmaking. The machine data acquisition (MDA) forms the interface between the machines and databases of planning, control and analysis. The machine data and parameters can be transferred directly from the machine control system to the systems. Alternatively, data can also be recorded by a control-independent sensor system directly at the machine, or manually. The messages received can additionally and online indicate the current status of production and ensure the traceability of the machining operations.

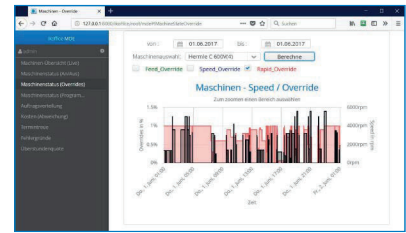
CONTROL AND PLANNING

IKOffice LivingMES enables the combination of MDA data with the powerful planning and control of IKOffice MoldManager for tool and moldmaking. At the same time, it forms the basis for determining and displaying many meaningful key performance indicators (KPIs). In addition, the entire range of analog and digital measurement technology can be used to record the values. The results can be visualized in the form of attractive dashboards sent directly to the controllers' workstations via the intranet or on large screens in the workshop.



QUALITY ASSURANCE AND PERFORMANCE IMPROVEMENT

The use of machine data can be seen as an essential factor for quality assurance and performance improvement in production and thus efficiently increase the competitiveness of a company. The key performance indicators are, among others, the overall equipment effectiveness (OEE), the program runs on the machines with program or article number, the machine downtimes or possibly measured values from automatic sensors and measuring devices.



EVALUATION AND DOCUMENTATION

With IKOffice LivingMES it is possible to obtain detailed and complete evaluations/documentation of the utilization, productivity, quality and runtime of production processes of operating resources, without error-proneness, inaccuracies and the effort of manual bookings. The top priority is to obtain data, but also to provide usable information that enables the production management to increase the efficiency of production by controlling and analyzing.



FEATURES



Digitalization



Paperless workshop



Machine connection



Tool documentation



Time recording

ADDITIONAL FEATURES

- Analysis of manufacturing processes and productivity
- Runtime
- Availability and reliability
- Energy consumption (switch-on and switch-off times)
- Can be used independently of the respective machine & control model

IKOffice
UNTERNEHMENS SOFTWARE

Marie-Curie-Straße 1
26129 Oldenburg Germany

Tel.: +49. 441. 2198 89 50

Fax: +49. 441. 2198 89 55

info@ikoffice.de

www.ikoffice.de